



GPS Reporter is an innovative reporting software tool, which allows users fast access to schedule adherence and bus headway information.

Installed at a central hub, performance monitoring is made simpler and quicker. Depot managers can use the predefined reports to provide reliability information at a depot level, whilst Regional Managers can query the entire database to get company wide reliability statistics.

On-bus GPS (Global Positioning System) receivers automatically capture, in real-time, GPS timing information and store this in the ticket machine module. When the module is signed-off, this information is transferred to the central server, via the depot reader PCs. Automatic processes on the server extract the GPS data from the modules and import them into the GPS Reporter database.

Using the latest in Microsoft® SQL™ server/client technology, GPS Reporter works in conjunction with any third-party Timetable/Scheduling software that provides an ATCO-CIF file export facility. This not only allows actual against scheduled data to be plotted, but because the system utilises GPS technology, all services can be continually performance monitored.

Features include:

- GPS Reporter consists of two main software components: Server and Client. The Server software is held centrally and is the hub of the GPS Reporter system. The Client software, which allows access to the GPS Reporter database, can be installed on any licenced PC on the network. Additional licences can be applied to suit the overall system requirement.
- GPS Reporter will handle very large databases through its use of Microsoft® SQL Server™ . Typically, data retention is only limited by the available server hardware – providing a fully scaleable system, equally effective for small operators as well as large corporate groups.
- GPS Reporter is supplied with a number of administration tools and reports as standard. Report parameters are individually selectable and retained for each user. No separate run-time software is required to produce reports.
- Because GPS Reporter requires access to Timetable and Scheduling information in an ATCO-CIF export format, a scheduled process on the server takes these files and imports them into the GPS Reporter database automatically without user intervention.

TRANSIT SYSTEMS LIMITED
WAYFARER

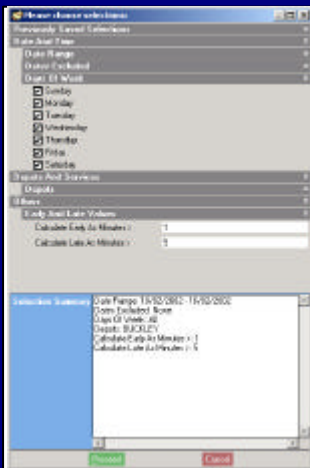
Fully Configurable

- GPS Reporter uses the Wayfarer Standard User Interface that provides a framework for Wayfarer's entire client/server suite of applications. Each application is supplied as a single 'plug-in' software module that is dropped into the server install area and automatically integrated into the system. New or updated commands, reports and options can be delivered via the Internet or CD and installed in the same way.
- Access to the GPS Reporter client software is restricted by login name and password and once logged in, the user will only be able to see applications, pages and commands for their current access level.
- Additional tools, reports and Wayfarer client/server applications can be installed *centrally on the server* and made immediately available to all users due to GPS Reporter's server-based design.

Administration

GPS Reporter is supplied with a number of configuration utilities for selection criteria. These include:

- Bank Holiday Editor
- Services Group Editor
- Schedule Exceptions Editor



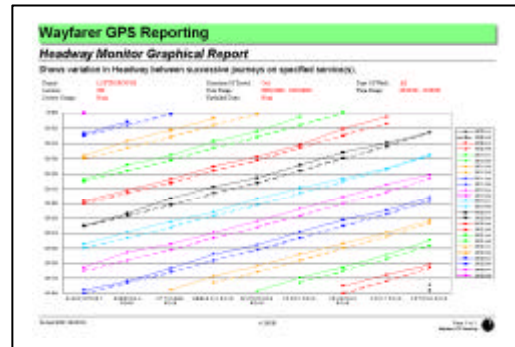
TRANSIT SYSTEMS LIMITED
WAYFARER

Reports

GPS Reporter is supplied with a standard reports page. Each of these reports is available for one, many or all Depots (or Garages/Regions) within the GPS Reporter database.

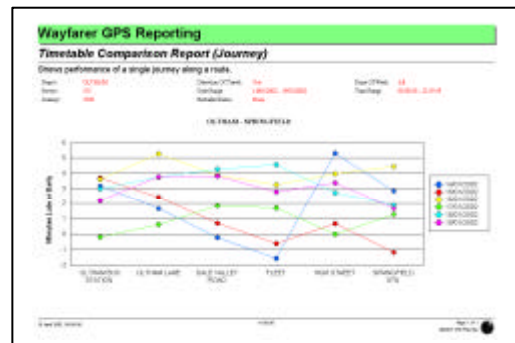
Headway Reports:

- Headway Change Report
- Headway Monitor Report
- Headway Monitor Graphical Report
- Waiting Time Report



Schedule Adherence Reports:

- Company Wide Reliability Statistics Report.
- Company Wide Reliability Statistics Graphical Report.
- Depot Summary Report.
- Driver Summary Report.
- Route Analysis Report.
- Route Variation from Schedule against Timing Point Report.
- Timetable Comparison Report.
- Timing Point Monitor Report.



**Wayfarer's GPS Reporting Software –
Yet another reason why we're a market leader**

10 Willis Way, Fleets Industrial Estate, Poole, Dorset BH15 3SS England

Tel: +44 (0) 1202 339339

Fax: +44 (0) 1202 339369

Email: sales@wayfarer.co.uk

www.wayfarer.co.uk